

du:pla

Plasma with Ar and Ne Gas Skin Care Device

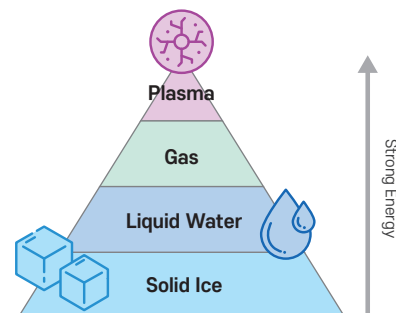


- Plasma
- Acne Sterilization
- Scar Treatment
- Cell Tissue Regeneration
- Brightening & Moisturizing
- Scalp Care

What is PLASMA?

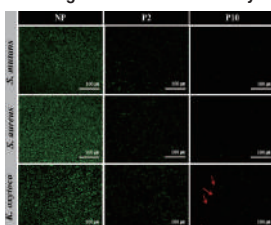
Plasma refers to a gaseous state in which negatively charged electrons and positively charged ions are separated at very high temperatures. At this time, although the degree of charge separation is quite high, the overall number of negative and positive charges is the same, so it becomes neutral. In general, matter is divided into three states: solid, liquid, and gas.

Plasma has unique properties that differ from lasers. It does not react to specific chromophores and there is no thermal damage. In addition, it acts from the skin's surface to the dermis layer, allowing quantitative treatment.



01 · The Science Behind the Treatment

Changes in Bacterial Viability

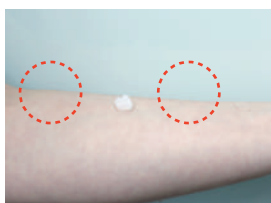


Live (green) ► Dead (red, arrow) stained bacteria

Destruction of Bacterial Cell Walls

The treatment shows a strong sterilization effect by destroying the cell wall of bacteria. The living tissue is hardly injured and has a bactericidal effect which can speed up the wound healing process. This is a good alternative to the resistance of existing antibiotics. It improves upon itching by killing the bacteria that cause atopy, and in the case of infant atopic dermatitis, secondary infection due to pruritus and skin damage leads to lichenification or skin pigmentation, but this stage can be blocked in advance.

Image Source : The antibacterial effect of non-thermal atmospheric pressure plasma treatment of titanium surfaces according to the bacterial wall structure



Transdermal Drug Delivery System

Plasma-generated ions temporarily break skin cell adhesion molecules (CAMs), temporarily opening the skin barrier. This creates a microscopic gap between cells by generating membrane potential on the skin, and by increasing the hydrophilicity, the ingredients of the solution penetrate directly into the skin, increasing the skin's absorption rate and helping to improve the skin. It is effective not only as a solution, but also in inducing skin regeneration by activating cells, strengthening cell vitality, and preventing cell proliferation and aging.

02 · Why Choose Du:pla?



Easy Maintenance

Without the hassle of periodically replacing the gas cylinder, you can use it conveniently by replacing the electrode only when the plasma becomes weak after 6 months to 1 year of use.



Non-invasive, Safe Procedure

The treatment is non-invasive and does not leave marks on the skin's surface. There is little irritation, so there is no burden even if you use it concurrently with other procedures. Compared to arc-type plasma, there is no risk of burns, so both the operator and the patient are comfortable and have no risk of injury.

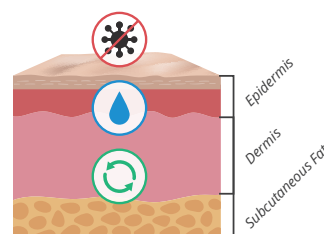


Safety Inspection Complete

The glass tube type works the most safe on the skin. The amount of ozone that affects respiration is also 0.0008ppm, which has completed the ozone CB test.

03 · Du:pla Effects by Skin Layer

- The effect of eradicating viruses and bacteria by breaking the bacterial molecular structure is shown.
- When skin cell adhesion molecules (CAMs) are broken, the skin barrier is temporarily opened to increase absorption.
- After a certain time of absorption, the cell wall is restored.
- This promotes the synthesis of new collagen and elastin, which has strong anti-aging effects.



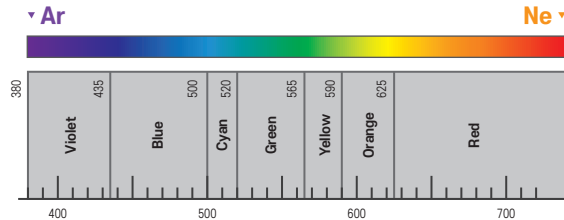
04 · Versatile Usage of Du:pla

Dual Wavelength

The wavelengths produced when generating plasma vary. Du:pla offers two of the most effective wavelengths.



Ar has a purple color and shows an excellent effect on inflammation by activating the skin's sterilization and absorption functions.



Ne has an orange color and promotes blood circulation to activate the metabolism, thereby regenerating the skin and helping to excrete waste matter from the body.

05 · 3 Types of Handpieces



Ne

The **Brush Type** has the widest contact surface and 9 acupressure rods act simultaneously with the plasma. It is easy for the solution to penetrate during scalp treatment, and it discharges toxins accumulated in the body through lymph circulation and blood circulation on a wide surface.



Ar

Ne

This is a **Straight-Shaped** handpiece that can be used in various ways, such as a wide side and a pen on the front.



Ar

Ne

This has a **different shape for the front and back** and provides a stable treatment with a wide area. It can be used to promote lymphatic and blood circulation in sensitive areas as back protrusion.

What procedure can Du:pla do?

Dermatitis, Rosacea,
Atopy, Active Acne

Hair Loss, Skin Tone,
Pigmentation, Pores

Scar, Regeneration,
Pruritus

06 · Treatment Results

Atopic Dermatitis



Before

After

Papule, Pustule



Before

After

Du:pla

Plasma with Ar and Ne Gas
Skin Care Device



Product Name	Du:pla
Power Consumption	50VA
Rated Voltage	AC 220V, 60HZ
Main Unit	375(W) X 285(L) X 135(H) mm / 2.7kg
Cart	400(W) X 380(L) X 780(H) mm / 12kg
Manufacturer	SNJ Co., Ltd

SNJ America Inc.

1258 Quarry Lane, Suite G, Pleasanton, CA 94566 U.S.A

Tel : +1(925)-474-7769 | **E-mail :** austin@medicalsnoj.com

Web : www.snjamerica.com

📍 snj.america 📺 [SNJ Medical](#)