

Finebeam Dual

Q-Switched & Long-Pulsed
Nd:YAG Laser

Competitive
THREE DIFFERENT PULSES
in One Platform
(Q-Switched, Long-Pulsed, Quasi)

Clinically Proven **LIOB**
for Skin Rejuvenation
(Laser-Induced Optical Breakdown)



01

Finebeam Dual

Q-Switched & Long-Pulsed
Nd:YAG Laser

Main Benefits

True Genesis
Long-Pulsed

MLA LIOB
EFFECT
Strong and Stable Power

High Power
Effective
PDP Pigment
Care

**Two
Chambers**

High Durability
Stable Power

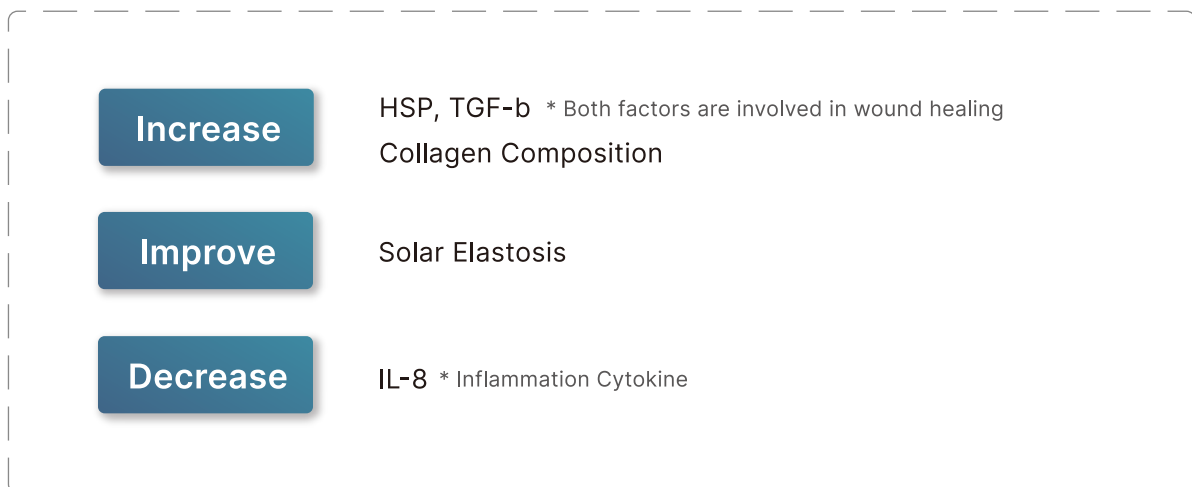
- **True Long-Pulsed** mode provides **Ultimate Genesis Toning Effect**
- **LIOB Effect** by installing **MLA Handpiece** thanks to the strong and stable power supply
- **Exceptional High Power in PTP Modes** enables to **Gently** treat the **Deeper Lying Skin Pigment** without adjacent tissue damage
- **Longer Life Time, Lower Maintenance Cost, Strong and Stable Power** supply with **Two Chambers**
- **High Cost Efficiency** with one laser system with three modes and maximize **Space Utility**

True Genesis Toning Effect with True Long-Pulsed Laser

No Cooling, No Pain, No Side Effect
Absolute Complete Comfortable Warm Feeling

Finebeam Long-Pulsed laser provides **True Genesis Toning Effect** which can't be realized with Q-Switched Quasi mode. The periodical and continuous genesis toning restore youthful skin so it is recommended as **LIFE CARE**.

Genesis Technique is the Way to Activate the Fibroblast of Papillary Dermis



Whitening: Melasma and other pigments associated solar elastosis caused by long term UV exposure

Tightening: Skin Texture, Pore Size, Wrinkle

Finebeam MLA Handpiece

Realize LIOB adopting MLA handpiece for optimal skin revitalization effect

Using more advanced resonator technology and a specially designed arm, there is almost no energy loss passing the laser arm from a resonator to the end of the arm.

Hence when you check our display power and output power from the resonator with an energy meter, there is only a small difference; real power from the end of the arm is around 4% lower than power from the resonator.

On the other hand, in the case of other lasers, the real power that came from the end of the arm is around 20% lower than display power.

Almost 100% energy delivery to the handpiece realize the defined LIOB effect.



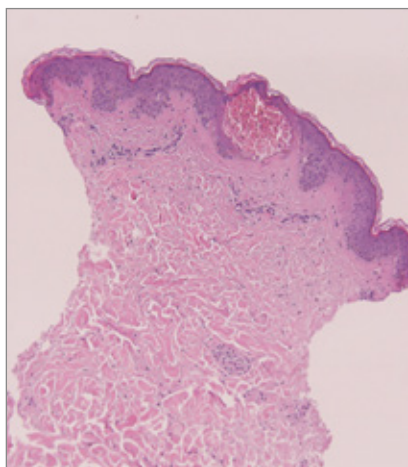
What is LIOB, Laser-Induced Optical Breakdown?

When high power short pulse laser is emitted, plasma is generated with cavitation sensation by multiphoton in the dermis. At that moment, a shock wave is generated and it breaks tissue down in the dermis, and neo-collagen is filled in that space as the natural skin recovery mechanism.

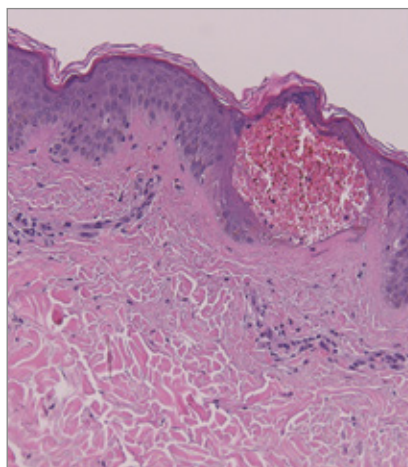
Finebeam optionally supplies the same **MLA** handpiece with **PICO** laser, when the strong and stable laser power is irradiated through this handpiece, it provides the representative performance of **PICO** laser **LIOB**.

Clinically Proven LIOB Effect for Skin Rejuvenation

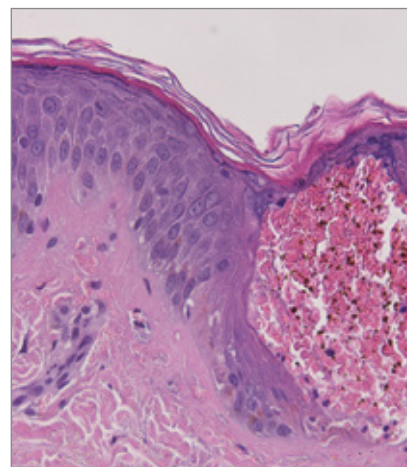
Courtesy of SNJ



100x



200x



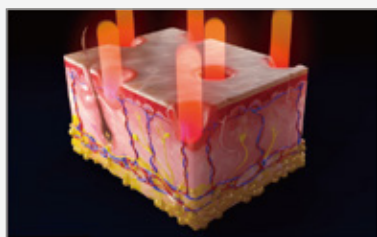
400x

Histology Picture Tested by Finebeam

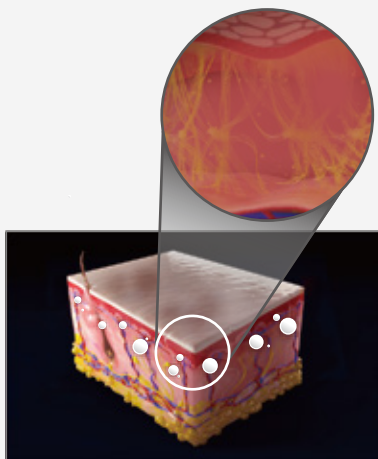
Finebeam Dual

Q-Switched & Long-Pulsed
Nd:YAG Laser

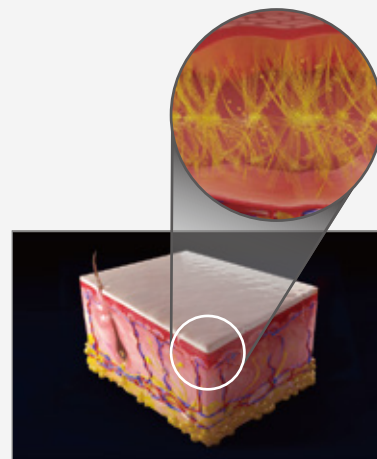
LIOB Mechanism



1. High power short pulse laser effect only in the dermis without damage in the surface.

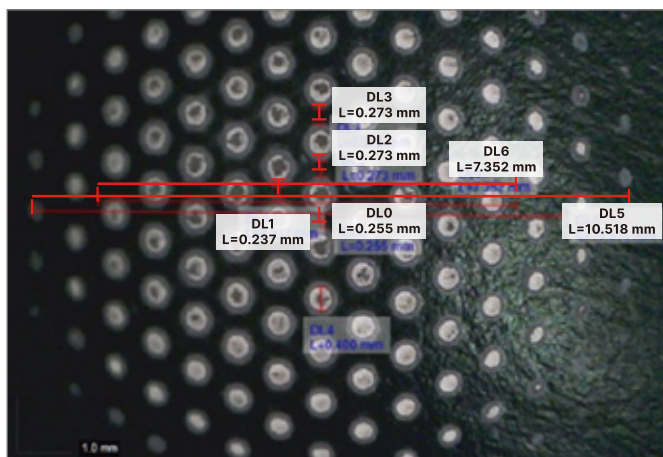


2. Multiphoton in dermis generate plasma effect and cavitation effect. So explosive vaporization and mechanical expansion occur in the dermis so several vacuoles are made but no damage in the epidermis.



3. The several vacuoles work like subcision and they are filled with neo-collagen thanks to the natural body recovery mechanism.

Specifically Designed Finebeam MLA Handpiece



MLA handpiece is equipped with **120 Micro Lenses**.
The beam from the MLA handpiece has 100 **Effective Spots**, they keep a certain distance of about **0.25~0.3mm** so it will show consistently good performance without side effects.



- Finebeam MLA Handpiece -

Optimal Results in All Indications Related with Skin Regeneration

Acne Scar, Pore Size, Skin Laxity, Skin Texture, Fine Wrinkles, Dermal Pigments etc.

Male / Pore & Scar



Before

4 Sessions After

Female / Scar



Before

4 Sessions After

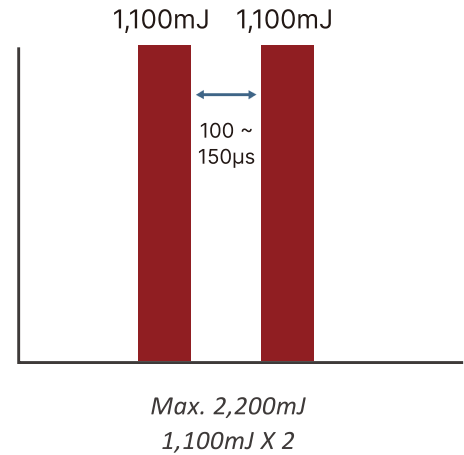
Courtesy of Y.H. Hwang M.D

Finebeam Exceptional High 2.2J PTP Mode

High power of PTP mode gently and powerfully treats dermis pigments

Finebeam PTP mode peak power is 2.2J,
it is around 10 to 30% higher than others.

To break melanin in the dermis, if an operator increases power only with the single-mode, laser reacts with the melanin in the epidermis before reaching the dermis or it can be the cause of epidermal skin trouble like hypopigmentation or folliculitis, etc. In PTP mode by dividing the pulse with two, up to high power 2.2J energy can safely and effectively be delivered to the dermis without skin damage. Even though dividing with two pulses, peak power for one pulse is still high as 1.1J, the high power can generate a photoacoustic effect enough to break melanin and tattoo ink, etc in the dermis.



Female / Melasma & ABNOM

Courtesy of Y.H. Hwang M.D



Before



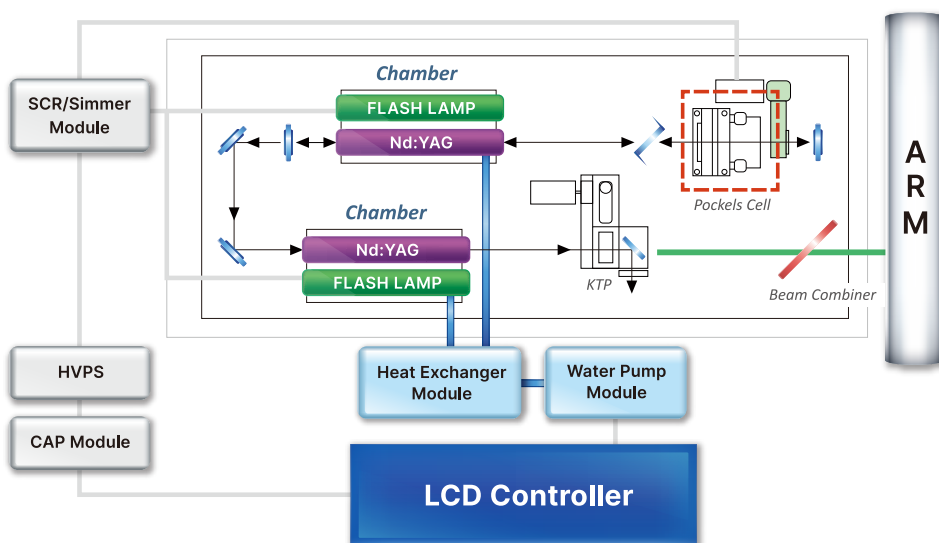
10 Sessions After

After several treatments with a single pulse, when you can't see the improvement anymore and you can see the light pigment in the dermis, it is the right time to treat with PTP mode.

Optimal Results for Pigment in Dermis

Melasma, Abnom, Tattoo etc.

Finebeam Stable Power, Longer Life Time, Low Maintenance Cost



- Finebeam Two Chambers Laser Head -

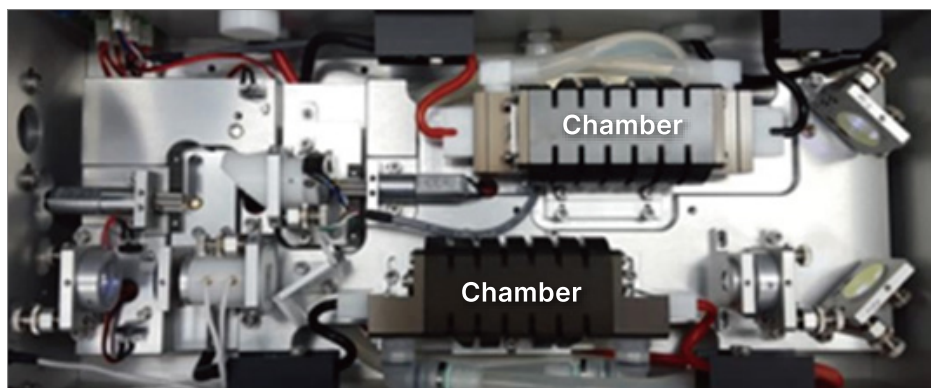
07

Finebeam Dual

Q-Switched & Long-Pulsed Nd:YAG Laser

Most of Q-Switched lasers are adopting a power supply maximum of 1,400V. One chamber resonator requires 1,100~1,200 voltage for reaching over 1.2J. By comparison, Finebeam two chambers resonator requires only 800 ~ 900V to reach it. Considering the real performance of the power supply is between 1,200~1,300V, one chamber resonator has an average 150V margin. This small margin of one chamber device can put a lot of strain on the resonator, it shortens the lifetime and causes unstable output power.

However, Finebeam two chambers resonator has around a 400V margin. And it ensures a longer lifetime, lower defect rate, and stable output power. If you can save maintenance costs, it is the same with lowering device unit price.



- Finebeam Two Chambers Laser Head -

Finebeam Cover Wide Range of Indications

With Three Different Pulse Durations; Nanosecond (Q-Switched), Microsecond (Quasi), Millisecond (Long-Pulsed)

The three different pulse durations offer optimal results by a combination of different pulse treatments and smart different layers approaches.

- **Dual Toning**

Toning with Q-Switched → Genesis Toning with Long-Pulsed

- **Tri Full Toning**

Toning with Q-Switched → Genesis Toning with Long-Pulsed
→ MLA with Q-Switched



High Cost Effectiveness High Space Utilization

It allows high cost-effective by the versatile indications as well as improving space utilization.

4 Different Range of Wavelengths Target a Various Type of Pigment

ZOOM handpiece is generally used for all type of pigments. And our various types of handpiece enhances the treatment efficacy and safety.

Homogenous laser beam profile of DOE handpiece ensures safety during treatment since laser energy is evenly distributed across the treated area. DOE in single mode focuses on the epidermis but when you treat it PDP mode with high energy, it reaches the dermis. Converting the mode to PDP and Quasi, it treats the deeper lying pigment. Fractional spot size is kept as same, so energy and the mode setting is the unique parameter for DOE so it allows a safe, easy approach to the pigment and short recovery time.

585nm DYE is for vascular melasma, 650nm DYE is for rosacea and fine blood vessels.

**1064 & 532
Zoom Collimation**

1064 DOE QSW

650nm Dye







585nm Dye



Safe and Convenient Automatic 'Handpiece Type' and 'Spot Size' Detection Function

- Standard supplied Zoom Collimation handpiece keeps the same spot size and power up to 10 cm distance from the skin, it makes capable of non-contact treatment without additional purchasing of Collimation handpiece.
- DOE handpiece offers uniform beam quality, good for pigment care and it shortens recovery time and lessens pain.
- Various type of handpiece enhances the synergy effect with combination treatment.

6 different types of Handpiece Helps for Achieving Desired Clinical Results

Zoom Collimation * All Applications in General QSW & LPS 1064 : 2~10mm / 532 : 1~7mm			C O L L I
		► Standard	
Collimation * Toning, Carbon Peeling QSW 1064 : 8mm			F R X
		► Option	
DOE * Pigment Care QSW 1064 : 5mm			
		► Option	
MLA * Elasticity Related Care QSW 1064 : 10mm			D Y E
		► Option	
650nm Dye * Rosacea and Fine Blood Vessel QSW 1064 : 4mm			
		► Option	
585nm Dye * Vascular Melasma QSW 1064 : 4mm			
		► Option	

Technical Specification

Product Name	Finebeam Qplus	Finebeam Dual
Pulse Energy (Max)	1064 Q Single: 100~1200mJ	1064 Q Single: 100~1600mJ
	1064 Q Double: 500~2000mJ	1064 Q Double: 500~2200mJ
	532 Q Single: 20~500mJ	532 Q Single: 20~500mJ
	1064 Quasi-Long: 100~3000mJ	1064 Quasi-Long: 100~3500mJ
		1064 Long: 1~60J
Laser Type	Q-Switched & Long-Pulsed Nd:YAG Laser	
Wavelength	1064/532nm	
Pulse Duration	1064 Single	< 10ns
	532 Single	< 10ns
	Quasi	< 350μs
	1064 PDP	< 20ns
	1064 Long-Pulsed	< 0.3~300ms
Repetition Rate	Single, 1~10Hz	
Beam Delivery System	Articulated Arm with Handpiece (7 Joint)	
Aiming Beam	Laser Diode, 3mW Pilot Beam (655nm)	
Cooling System	Internal Water to Air Heat Exchanger	
Electrical Power	100~240VAC, 50/60Hz	
Dimension	320(W) x 850(L) x 800(H) mm	
Weight	80kg	

INDICATIONS

Q-Switched :

Melasma & PIH Improvement, Nevus of Ota & ABNOM Removal, Soft Peeling, Tattoo Removal, Freckle, Lentigines, Café-au-lait Spot, Becker's-Nevus, Age Spot Improvement

Long-Pulsed :

Genesis, Skin Tightening & Lifting, Acne Erythema Improvement, Telangiectasia, Hair Removal



Dual finebeam

Q-Switched & Long-Pulsed Nd:YAG Laser

True Genesis
Long-Pulsed

MLA LIOB
EFFECT
Strong and Stable Power

High Power Effective
PDP Pigment
Care

**Two
Chambers**

High Durability
Stable Power



▼ Connect with SNJ Medical

SNJ Co., Ltd No. 608, Ace-Techno Tower 2, Digital-ro 31-gil 19, Guro-gu, Seoul, Korea

Tel : 82-2-866-9005 | Fax : 82-70-8622-9009 | E-mail : overseas@medicalsnoj.com



SNJ



medicalsnoj



SNJ Medical

