

Blue Ice

TECHNICAL SPECIFICATION

Airflow	1500ℓ / min
Cooling Temperature	Max -30±5℃ / Min -10±5℃
Cooling Duration	5~90 minutes
Handpiece Type	5.5mm / 12mm / 20mm
Electrical	100-240VAC, 50/60Hz
Length (Air Hose)	Standard 2m / Max 5m
Weight	60KG



Decide Blue Ice

Cooling Device

Postinflammatory hyperpigmentation is one of the most common adverse effects in dark-skinned patients after laser treatment.

Cooling of the epidermis can prevent its temperature elevation from exceeding the threshold for thermal injury.

Minimizing the nonspecific thermal injury to the skin surface caused by the laser pulses may therefore lower the incidence of PIH.

Blue Ice

Tall tower type
UI is on the front



Blue Ice Plus

A wider top area
Simplified UI



GET IN TOUCH WITH US

SNJ Co., Ltd
No. 608, Ace-Techno Tower 2, Digital-ro 31-gil 19, Guro-gu, Seoul, Korea
Tel : 82-2-866-9005 | Fax : 82-70-8622-9009
| E-mail : overseas@medicalsnoj.com | Web : www.medicalsnoj.com

f SNJ @ medicalsnj ▶ SNJ Medical

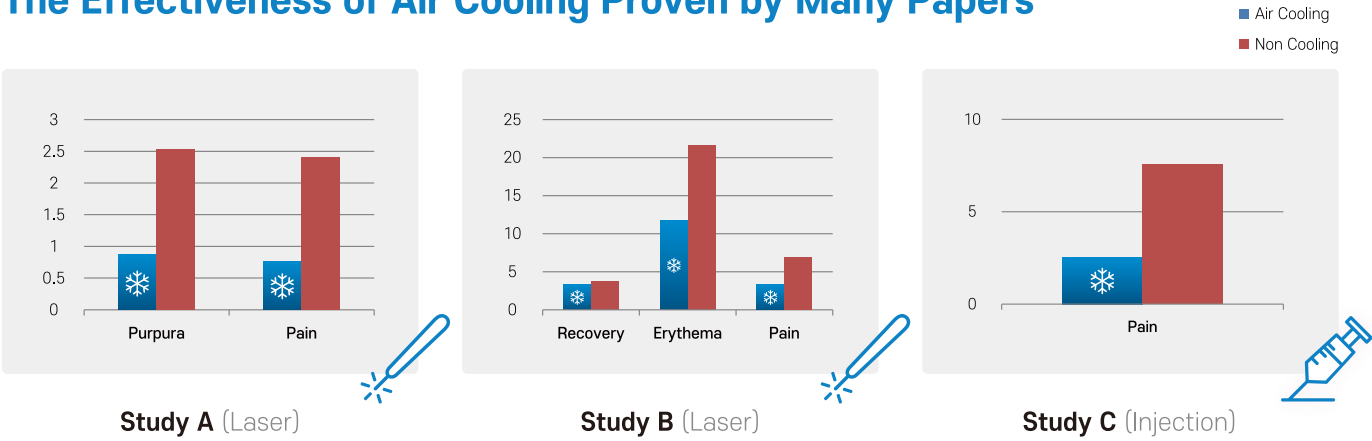
Adapter	
	Adapter for all types of Lasers
Accessories	
	Self Fixed Hose
	Extending Hose
	Tips for delicate areas



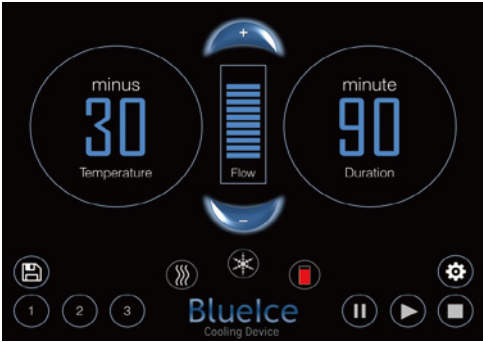
Blue Ice is a Powerful Pain Reliever

without anxiety about hypnoanesthesia & injection anesthesia
And Maximize the Effect of the Procedure!

The Effectiveness of Air Cooling Proven by Many Papers

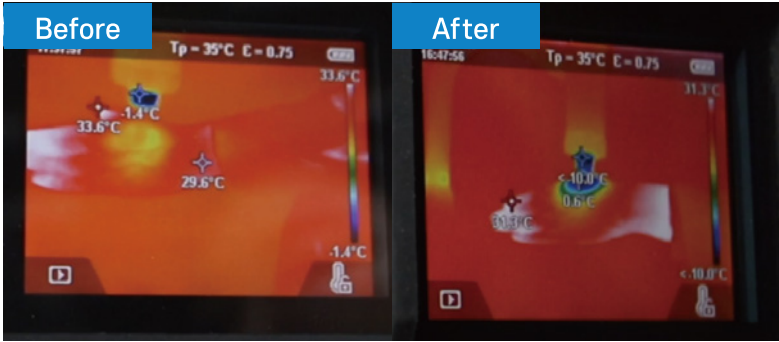


Study Source
A: Evaluation of different temperatures in cold air cooling with pulsed-dye laser treatment of facial telangiectasia
B: Single-Pass Carbon Dioxide Laser Skin Resurfacing Combined With Cold-Air Cooling Efficacy and Patient Satisfaction of a Prospective Side-by-Side Study
C: Skin cooling for botulinum toxin A injection in patients with focal axillary hyperhidrosis: a prospective, randomized, controlled study



Smart Touch Panel

Using an intuitive LED icon, convenient control for temperature, processing time, and flow intensity.

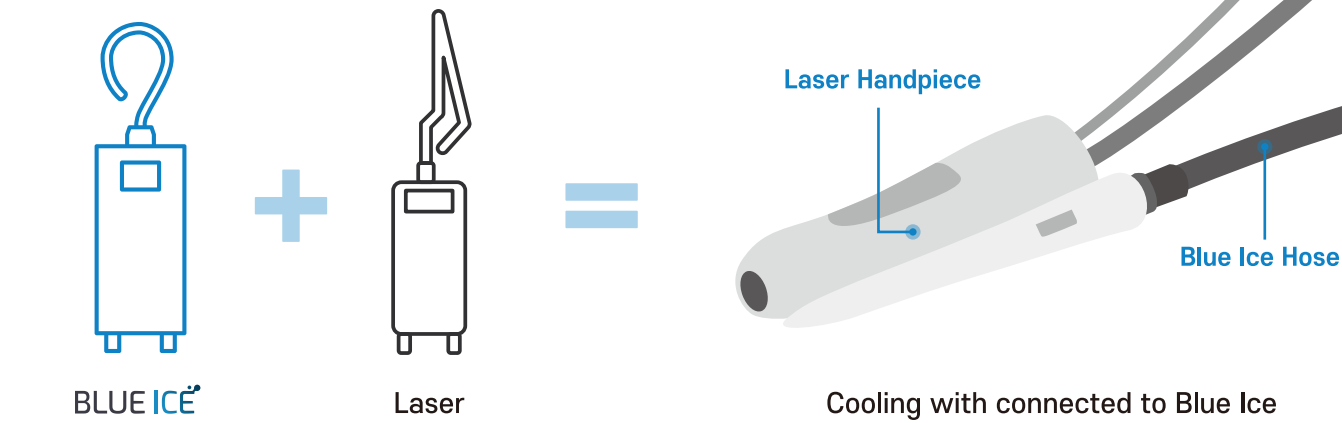


Powerful but Delicate

With delicate air volume control in 1-10 levels, helps to reduce pain during treatment, -30°C strong cold wind affects the deep part of the skin.

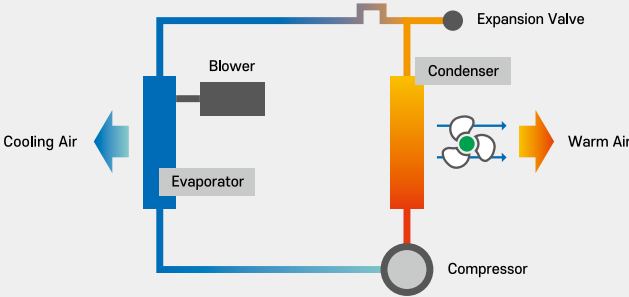
Compatible Connection

Blue Ice is compatible with other lasers, enabling more convenient and safe procedures.

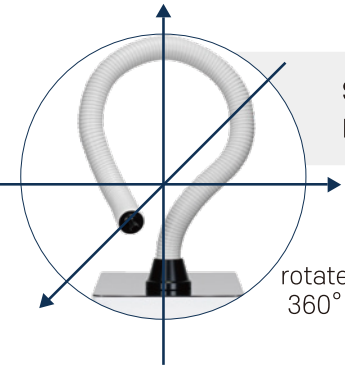


Advanced Air Cooling System

Inhale and compress indoor air and condenser cooled at -30°C to remove moisture, frost, and dust generated with soft and clean cold air. Gives a comfortable feel in Air Cooling without contacting the skin.



Various Accessories



Self Fixed Hose
No assistant required

Standard
20 mm

Tip A
12 mm

Tip B
5.5 mm

Extending Hose
Long head-to-toe hose
Standard 2m / Max 5m

Customized Tip
Delicate control the flow rate and area

Why BLUE ICE

“Minimizing Pain, Side Effect, Recovery Time”
leads to best patient satisfaction



Side Effect



Pain



Recovery Time